

WEEK **11**
Sept 27, 2024

Project Updates by:
Shane Kelliher / Project Mgr
Office 920-751-4200
skelliher@mcmgrp.com
Fred Sommers / Onsite Rep
fsommers@mcmgrp.com

Project Update

Forest County Potawatomi - Stone Lake North Sewer & Water Reconstruction

NOTE TO INTERESTED PARTIES: Additional Project information at www.mcmgrp.com under RESOURCES\ In Construction...select the **FCPC Stone Lake North Sewer & Watermain Construction** project.

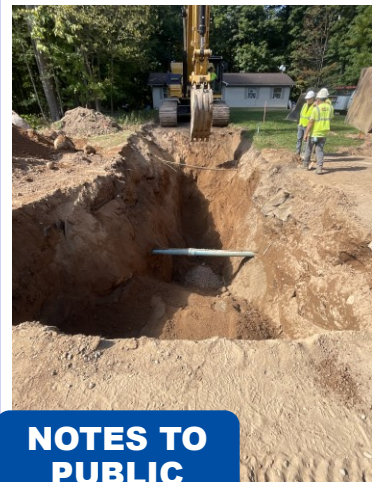
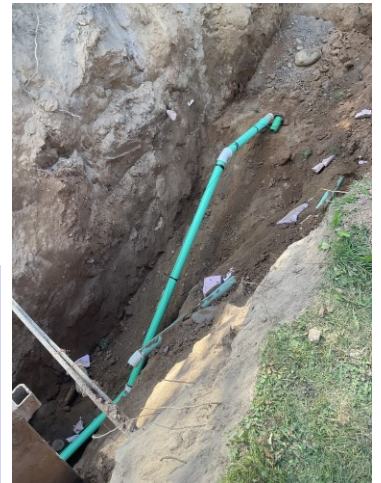
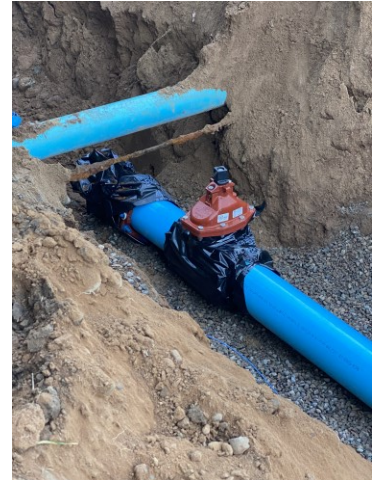
Week of September 23-27

The first crew focused on water main on Kwe da Kik Court and We j bge Snok Court. The crew had some down time earlier in the week for an emergency repair on the existing water main. The second crew stayed along We j Mogek Court with sanitary sewer installation north of Kak Yot Lane and then worked on laterals. This crew took time to assist in some local Historic Preservation Training with the Cultural Review Team. A third crew mobilized this week and started working on storm sewer along Kwe da Kik Lane.



Future Schedule:

The first crew plans to stay on water main on We j bge Snok Court and Kwe da Kik Court next week. The crew on We j Mogek Court will continue with sanitary laterals then switch over to water main. The third crew plans to stay on storm sewer. A survey crew will be on-site starting Monday to complete the water main staking on We j Mogek Court and Kwe da Kik Court.



Now that a third crew started, there will be additional congestion. Traffic remains open to the public, however, there may be delays and some minor detouring to help maintain traffic flow. Please use caution as there are barricades and fencing throughout the project protect the recently installed manholes and valves until the road grading begins. Residents are encouraged to be patient and plan accordingly during this time.

During water service transfers, service to each individual house will temporarily be down during the switch from the existing water system to the new system. The downtime without water should be short-lived and expected to be no more than 2 hours.

To ensure a safe work environment, it is requested that residents monitor their children and pets and keep them away from the work areas. Though the site is open to traffic, please help keep the unnecessary traffic away during working hours. Viewing the construction from a distance (lawn area) is acceptable at this time. As the laterals are installed and the septic tanks removed, it is requested to view the construction from indoors.

NOTES TO PUBLIC