

WEEK **19**

November 13, 2020

Project Updates by:

Jerry Lee / Onsite Rep  
[jlee@mcmgrp.com](mailto:jlee@mcmgrp.com)

Nick Vande Hey, P.E. / Project Manager  
Office 920-751-4200  
[nvandehey@mcmgrp.com](mailto:nvandehey@mcmgrp.com)

# Project Update

Town of Grand Chute  
Evergreen Drive  
(Town Lakes Avenue to Orion Lane)

## NOTE TO INTERESTED PARTIES:

Additional Project information at [www.mcmgrp.com](http://www.mcmgrp.com) under Resources\In Construction\Evergreen Drive or you can click on the bulldozer icon on the right side of the page and select the Evergreen Drive project. You can also get project Tweets by following <https://twitter.com/McMEvergreenDr>

## Week of Nov. 9 - 13

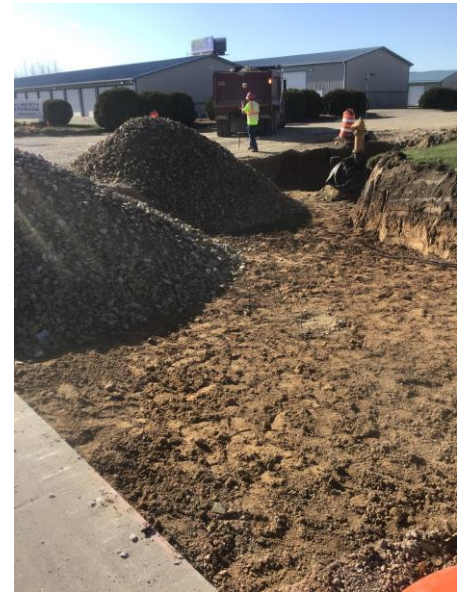
Superior Sewer & Water completed miscellaneous utility adjustments and cleanup before leaving the site.

Michels Corp. completed the road subgrade excavation for the north side of Evergreen Dr. from sta. 39+0 to sta. 47+0. The contractor also completed much of the earthwork at the Town Hall pond and fill site.

Highway Landscapers placed riprap around the endwalls and outlet structure at the Town Hall pond and completed temporary seeding and mulching for the three project sites.

## Looking Ahead:

Besides a few miscellaneous earthwork, temporary seeding and mulching, and erosion control items, the Evergreen Drive Project is shut down for the Winter with work to resume in the Spring.



## NOTES TO PUBLIC

Evergreen Dr. from Orion Ln to the Town Hall is not open to traffic and residents should refrain from moving barricades to access the road.

