

WEEK **15**  
October 16, 2020

Project Updates by:

Jerry Lee / Onsite Rep  
[jlee@mcmgrp.com](mailto:jlee@mcmgrp.com)

Nick Vande Hey, P.E. / Project Manager  
Office 920-751-4200  
[nvandehey@mcmgrp.com](mailto:nvandehey@mcmgrp.com)

# Project Update

Town of Grand Chute  
Evergreen Drive  
(Town Lakes Avenue to Orion Lane)

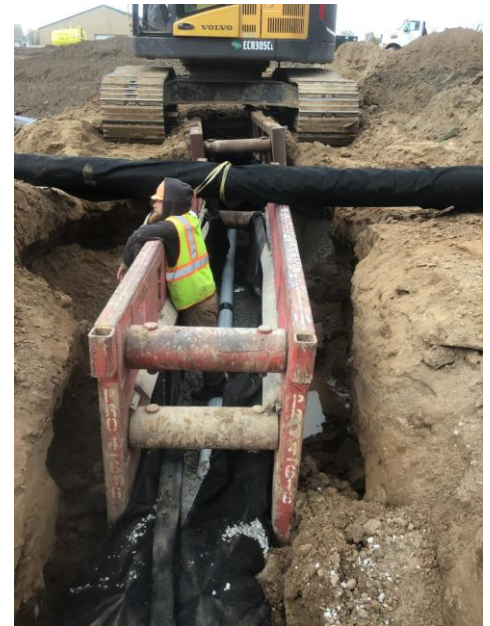
## NOTE TO INTERESTED PARTIES:

Additional Project information at [www.mcmgrp.com](http://www.mcmgrp.com) under Resources\In Construction\Evergreen Drive or you can click on the bulldozer icon on the right side of the page and select the Evergreen Drive project. You can also get project Tweets by following <https://twitter.com/McMEvergreenDr>

## Week of Oct. 12 - 16

Highway Landscapers completed the 6" venting trench around the Town Hall Pond.

Michels Corporation placed the 1 1/4" stone base layer east of the box culverts. The contractor also moved all excess material from the fill site at the Town Hall to the east side of the railroad tracks.



## Looking Ahead:

### Schedule for Week of Oct. 19 - 23

Michels Corp. will be off-site but may have Highway Landscapers seed, fertilize and mulch/e-mat around the Town Hall pond and fill site.

Superior Sewer & Water will be back to begin storm sewer construction west of the railroad tracks up to sta. 19+0.

## NOTES TO PUBLIC

Michels Corp. placed a pile of gravel across the new road just east of Gillett Street to prevent vehicles from using the construction site as a through street.