

WEEK **14**  
October 9, 2020

Project Updates by:

Jerry Lee / Onsite Rep  
[jlee@mcmgrp.com](mailto:jlee@mcmgrp.com)

Nick Vande Hey, P.E. / Project Manager  
Office 920-751-4200  
[nvandehey@mcmgrp.com](mailto:nvandehey@mcmgrp.com)

# Project Update

Town of Grand Chute  
Evergreen Drive  
(Town Lakes Avenue to Orion Lane)

## NOTE TO INTERESTED PARTIES:

Additional Project information at [www.mcmgrp.com](http://www.mcmgrp.com) under Resources\In Construction\Evergreen Drive or you can click on the bulldozer icon on the right side of the page and select the Evergreen Drive project. You can also get project Tweets by following <https://twitter.com/McMEvergreenDr>

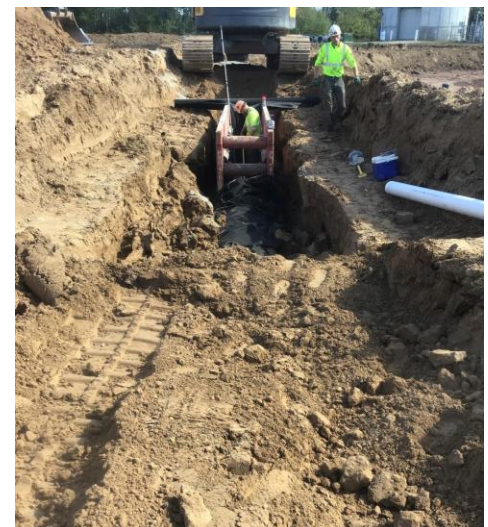
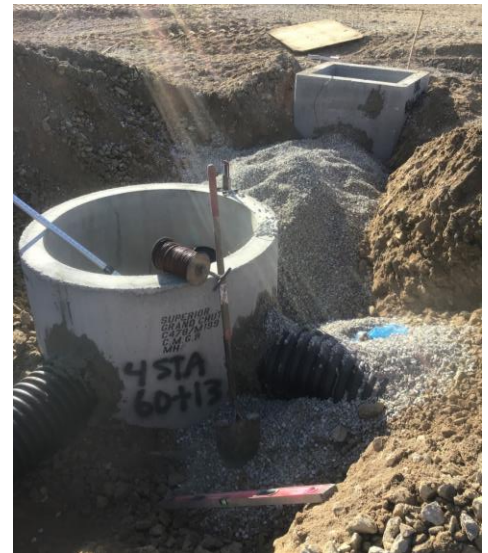
## Week of Oct. 5 - 9

Superior Sewer & Water installed the remaining storm sewer east of Gillett Street which completes all utility construction from the railroad tracks to Orion Lane. Highway Landscapers started work on the venting trench around the Town Hall Pond. Michels Corporation cut the new road from the railroad tracks west to sta. 19+00 and placed the first layer of 3" stone base. Michels also continued earthwork around the Town Hall pond and fill site.



## Looking Ahead: Schedule for Week of Oct. 12 - 16

Highway Landscapers will complete the venting trench around the Town Hall pond. Michels Corporation will continue earthwork at the Town Hall pond and fill site and place topsoil in the completed areas. Michels will have Highway Landscapers restore the completed areas around the pond with fertilizer, seed and mulch or erosion mat as required. Superior Sewer & Water will be off site until Oct. 19.



## NOTES TO PUBLIC

Evergreen Drive is not open to traffic between Gillett Street and Orion Lane. Residents should refrain from moving the barricades and using the construction site as a through-street.