

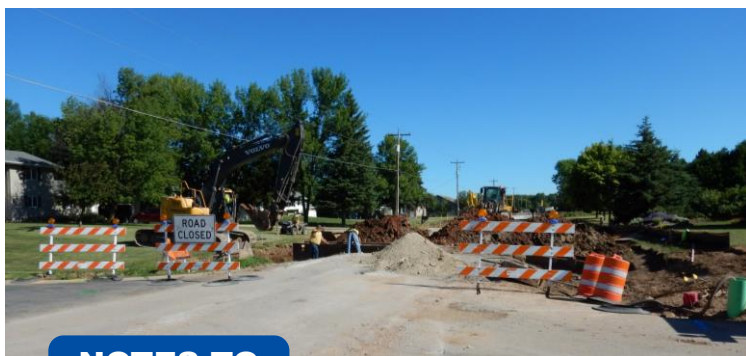
Additional Project information at [www.mcmgrp.com/Resources/In Construction/Town of Grand Chute - Casaloma Drive](http://www.mcmgrp.com/Resources/In%20Construction/Town%20of%20Grand%20Chute%20-%20Casaloma%20Drive)
You can also get project Tweets by following <https://twitter.com/McMCasaloma>

Week of July 2-6

Advance Construction installed water services as well as hydrant relocation on entire project.

KS Energy Services (We Energies contractor) relocated private electric and gas utilities north of Capitol Drive.

Pieper Power (We Energies contractor) continued electric line relocation at Victory Lane.



NOTES TO RESIDENTS

Water service installation

Looking Ahead: Schedule for Week of July 9-13

Advance Construction is scheduled to install storm sewer at far North end of project and continue 36" storm sewer installation from North of Amberwood Lane to North of Capitol Drive

KS Energy Services (We Energies contractor) is scheduled to continue relocating utilities.

Pieper Power is scheduled to continue electric line relocation at Victory Lane.

Future Schedule:

Advance Construction is scheduled to continue storm sewer installation between Amberwood Lane and Capitol Drive.

Relyco is scheduled to start work on the Bentwood Estates ponds.



Water service installation

Casaloma Drive will be closed to through traffic but will remain open to local traffic. We advise avoiding the work area as much as possible. The temporary access road from Cobble Creek Drive is open.